

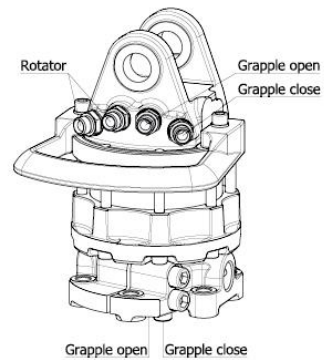
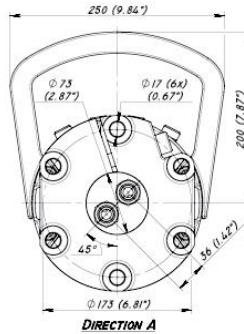
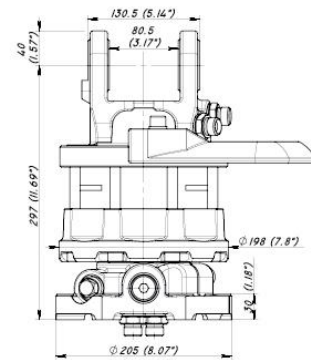
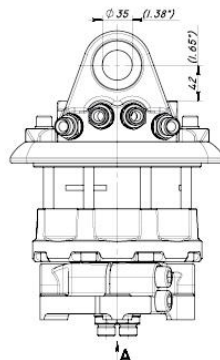
RM2 1650



ton. 8,0 - 12,0

mm	Kg.	bar	Kg.	m ²	mm	mm	mm	mm	A mm	B mm	mm
1650	263	230	4000	0.31	935	100	1030	600	550	905	468

C 65 F - GR 603



Technical data

Rotation	Unlimited
Max axial load static, KN (lbf)	60 (13491)
Max axial load dynamic, KN (lbf)	30 (6745)
Torque at 25Mpa (3625psi), Nm (lb ft)	1900 (1401)
Rec oilflow, l/min (US gallon)	25 (6.6)
Weight, kg (lb)	43 (95)

Max working pressure:	Connection:
Rotator Max 25 MPa (3625 psi)	G 1/2"
Grapple / Tool open Max 20 MPa (2900 psi)	G 1/2"
Grapple / Tool close Max 30 MPa (4350 psi)	G 1/2"

